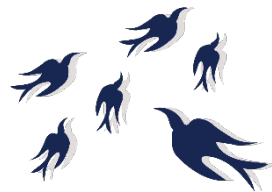


## In This Room



This service was established to give all students the opportunity to consult with a counselor on various issues that may arise during the course of their studies at Keio University. Rather than struggling with problems alone, students are encouraged to consult with staff at the Counseling Room for professional assistance.



## EVENTS



The Student Counseling Room hosts numerous workshops to assist students with self-discovery and self-expression. These activities also provide a venue for students to expand their social network. Please refer to the homepage for upcoming events. These workshops are held in Japanese but all students are welcome to participate.

### Student Counseling Room

<https://www.students.keio.ac.jp/en/com/life/consult/counseling-room.html>

Please check more information about the consultation process and resources on mental health care.



Updated on Apr. 1st, 2021

## Student Counseling Room



**Keio University**

## How To Use This Service



In principle, consultations must be reserved in advance.

1. Call the Student Counseling Room to request a date and time for an appointment.
2. We will ask for your name, student ID number, faculty, year level, contact details, and an emergency contact.
3. Counseling sessions are 30 minutes to an hour each and are available free of charge to all students.

If required, counselors may also refer students to other institutions on or off campus for follow-up assistance. Consultations are confidential.

- All counseling rooms are closed on weekends and holidays.
- The counseling rooms at any campus are available regardless of your affiliation.
- Please check the website for the latest information.



## We Assist With:



- Academic studies
- Extracurricular activities
- Life planning and career guidance
- Interpersonal relationships
- Queries regarding personality/behavioral concerns
- Physical and mental health issues
- Other issues that arise as part of student life

## Location & Available dates in English

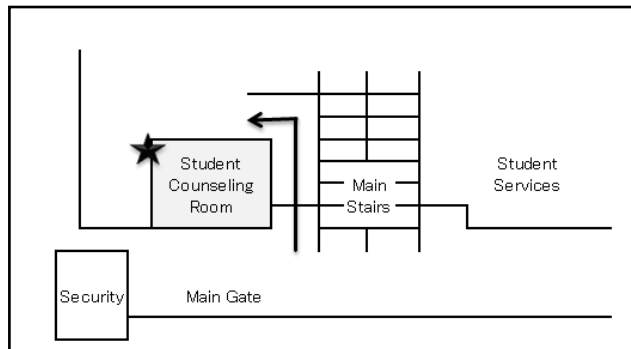


Mita Campus (9:30 AM–4:30 PM)

B1F, South School Building  
 OPEN: Tuesday and Wednesday

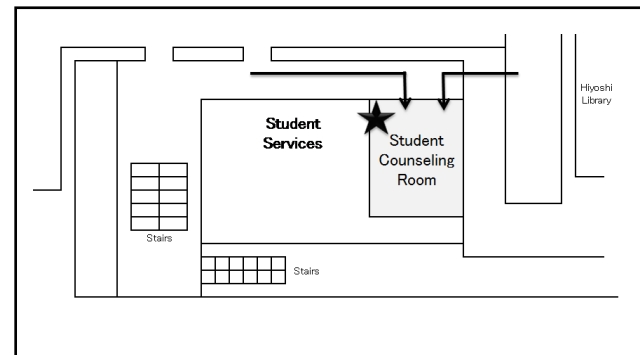


**TEL 03-5427-1575**



Hiyoshi Campus (9:30 AM–4:30 PM)

1F, 4th Bldg., Independent Wing(Dokuritsukan)  
 OPEN: Friday



Yagami Campus (10:00 AM–5:00 PM)

Room 101, 1F 26th Bldg.  
 OPEN: Monday



**TEL 045-566-1431**

