

H Village

- Address: 5232-1 Endo, Fujisawa, Kanagawa 252-0816
- Access: The H Village is on campus grounds!
15 minutes by bus from Shonandai Station (Odakyu Enoshima Line, Sotetsu Izumino Line, or Yokohama Municipal Subway Blue Line), or 25 minutes by bus from Tsujido Station (JR Tokaido Line).

- House Type:
 - Paprika House [Both men and women (separated floors)]
 - Turmeric House [Women only]
 - Rosemary House [Both men and women (mixed floors)]
 - Basil House [Men only]
- Room Type and Size:
 - 5-person unit room
 - 8.38m² for a private room and 82.62 m² for a whole unit room, western style room



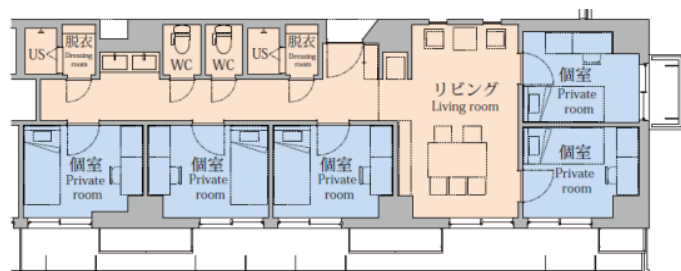
©Maki and Associates

- Rent:
 - Unit room: JPY 78,000 / Month
- * Rent includes bedding rental, utilities (electricity, water) and internet and meals.



* Meals (breakfast and evening meals) are provided from Monday to Sunday. (No meals are provided during year-end and new-year's holidays and August summer holidays (Obon).)

- Room Utilities:
 - In-unit utilities:
Living room, 2 shower rooms, 2 toilets and sinks, Wi-Fi, 2-door refrigerator
 - Resident room utilities:
Desk, bookshelf, chair, bed with a mattress, closet, air conditioner, room light, desk light, curtain, laundry-drying pole.



- Shared Spaces in Residential Buildings:
 - Entrance lobby, learning commons, communication space, shared kitchen, lounge, conference room, study room, laundry room, restrooms, elevator, bicycle parking, shoe storages, mailboxes, Internet(Wi-Fi)
- Shared Facilities:
 - Cafeteria, conference room, café lounge, multipurpose room
- Rules and Regulations:
https://www.students.keio.ac.jp/sfc/life/files/Hvillage_Rules&Regulations_EN.pdf

- Contact: Keio University Shonan Fujisawa Campus,
Student Life Section (0466-49-3408)
sfc-housing@adst.keio.ac.jp

- URL: <https://h-village.sfc.keio.ac.jp/en/>

Access Map

